



Store Name (State)
 CFA #
 Operator:
 Address
 City, State Zip

Overview

Number of cars
4,879

Total number of cars that went through the drive-thru

Rate (cars / hour)
59.5

Average number of cars per hour that went through the drive-thru

Window time
48.2

Average number of seconds a car was at the drive-thru window

Empty time
10.5

Average number of seconds between cars at the drive-thru window

CHANGE DATE FILTERS

Jul 20, 2025 - Jul 26, 2025

Week

Day of week

Day part

Hour

Focus Areas

When are we performing well?

Rate (cars / hour) per time period.

Day of week	Breakfast	Lunch	Afternoon	Dinner	Average
Monday	39.33	103.14	67.33	52.73	62.42
Tuesday	39.11	95.14	59	52.4	59.25
Wednesday	42.89	86.29	54	51.64	57.03
Thursday	43.11	95.71	62	46	58.67
Friday	45.78	90.57	64	50.36	60.12
Average	42.04	94.17	61.27	50.59	59.5

When can we do better?

Percent of cars, on average, that sat at the window longer than a minute.

Day of week	Breakfast	Lunch	Afternoon	Dinner	Average
Monday	35.03%	10.53%	22.77%	30%	22.62%
Tuesday	43.18%	12.91%	25.42%	30.92%	25.84%
Wednesday	35.75%	17.22%	30.25%	27.82%	26.46%
Thursday	32.99%	14.03%	32.26%	37.15%	27.38%
Friday	39.32%	15.77%	29.17%	33.57%	28.23%
Average	37.21%	13.96%	27.86%	31.77%	26.07%

CHANGE APP FILTERS

Sensor

Window service

Results range

Opportunities

1,272
 Cars sat at the drive-thru longer than a minute

What if these cars were completed in the average window time?

48.2 seconds

1,150
 More cars could have gone through the drive-thru

What is the average check amount?

\$ 5.95

\$ 6,842.50
 More money could have come into the restaurant



Store Name (State)

CFA #

Operator:

Address

City, State Zip

CHANGE DATE FILTERS

Jul 20, 2025 - Jul 26, 2025

Week

Day of week

Day part

Hour

CHANGE APP FILTERS

Sensor

Window service

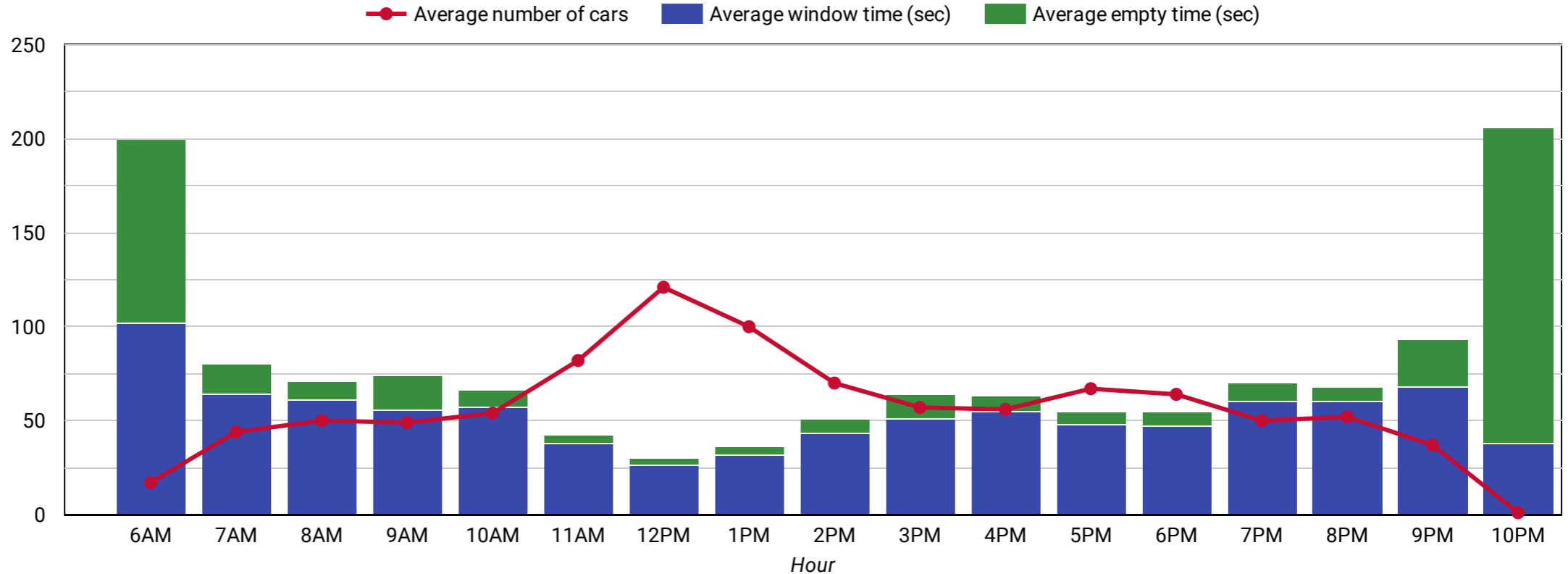
Results range

Daily Breakdown

How does each day part compare?

Day part	Average number of cars	Average window time (sec)	Average empty time (sec)
Breakfast	189	62.99	21.09
Lunch	329	33.41	4.72
Afternoon	183	49.21	9.36
Dinner	273	55.1	10.94
975 total cars per day average		48.2 average	10.5 average

How are we doing every hour?





Store Name (State)
CFA #
 Operator:
 Address
 City, State Zip

CHANGE DATE FILTERS

Jul 20, 2025 - Jul 26, 2025

Week

Day of week

Day part

Hour

CHANGE APP FILTERS

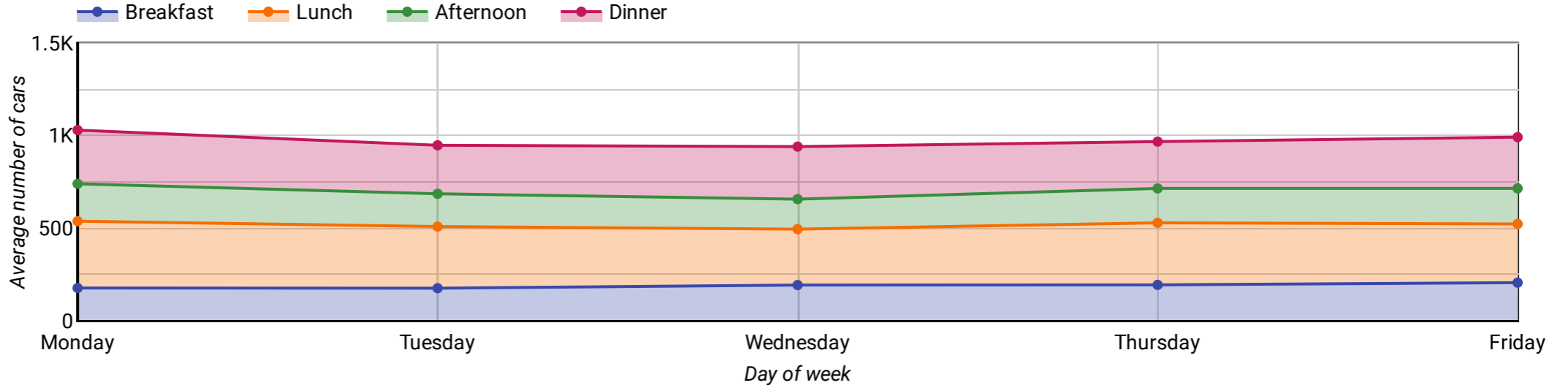
Sensor

Window service

Results range

Weekly Breakdown

How many cars have gone through the drive-thru?



How long are cars sitting at the window? How much time passes between cars at the window?

